

Winkelgelenke SA BEM25-60-501-DURBAL - BEM25-60-501-DURBAL

<https://www.123kugellager.ch/kugellager-gehauselager/gelenkkopfe-gelenklager/sa/bem25-60-501-durbal>

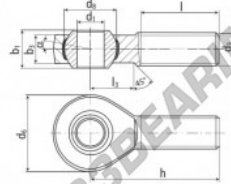
BEM25-60-501



male thread;
maintenance free,
adapter sizes
according to
DIN ISO 12240-4,
series K



**DURBAL® heavy-duty rod ends
with integral spherical
plain bearing in stainless steel**



rod end housing:
stainless steel 1.4301, rolled thread,
surface with pickling treatment

joint ball:
stainless steel, hardened and ground,
surface superfinished

race:
nylon / teflon / glass fibre compound

tolerances:
see page 10

order number		measurements [mm]		measurements [mm]		weight		basic load rating		
type	right-hand thread left-hand thread	d ₁	d ₂	d ₃	d ₄	l ₁	l ₂	C	stat. C ₀	
BEM 25 -60	-501	25	M 24 x 2	60	42,80	31	22,0			
type		measurements [mm]		weight		basic load rating		stat.		
h	l	l ₃	α ₁ [°]	α ₂ [°]	[kg]	C [N]	C ₀ [N]			
BEM 25	94	57	30	15,0	10,0	0,630	27860	79100		

PRODUKTMERKMALE

Marke	DURBAL
N° Ean13	3663952509877
Innendurchmesser	25 mm
Außendurchmesser	60 mm
Dicke	31 mm
Typ	SA
Gewicht	630 g
Gewinde	Rechtsgewinde
Schmierung	ohne
Verpackung	1

kontakt@123kugellager.ch

+49 (0) 800 001 076 6

CRT4 de Lesquin 60 Rue Du Haut De Sainghin 59273 Fretin FRANCE